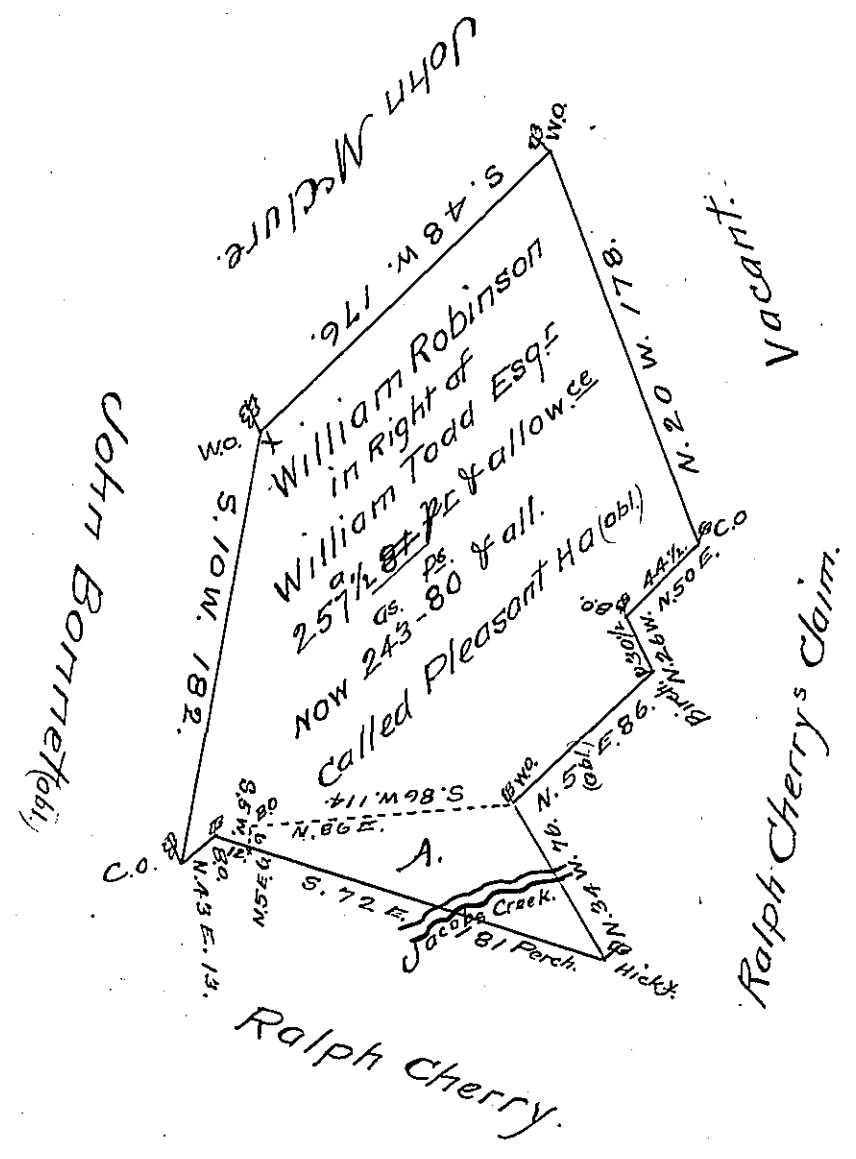


257.80 in the whole Tract
 14 " = Part A to be deducted for Cherry.
 243.80 Remains for William Todd.



IN PURSUANCE of a warrant bearing date August 30th 1785 Surveyed on the Seventh day of September 1786 unto William Robinson in Right of William Todd Esq. the above Discribed Tract of Land situate on Jacobs Creek in Mountpleasant (obliterated) County of Westmoreland Containing Two Hundred and fifty-seven Acres & 81 Perches & allowance of Six ^{Pr} Cent for Roads &c.

N. B. the piece cut off by the dotted lines at A overlaps or is overlapped by a Retⁿ. made by Benj^r Lodge for Ralph Cherry, see the Retⁿ.

To John Lukens Esq. Surveyor General.

Benj. Lodge D.S.

The above piece at A. order to be included in a Dft. of Jer^a Cherry by B^d. Property June Term 1788

IN TESTIMONY that the above is a copy of the original remaining on file in the Department of Internal Affairs of Pennsylvania, made conformably to an Act of Assembly approved the 16th day of February 1833, I have hereunto set my hand and caused the Seal of said Department to be affixed at Harrisburg, this eighteenth day of April 1907.

Grace D. Brown
 Secretary of Internal Affairs.